



Understanding the DEEP Process

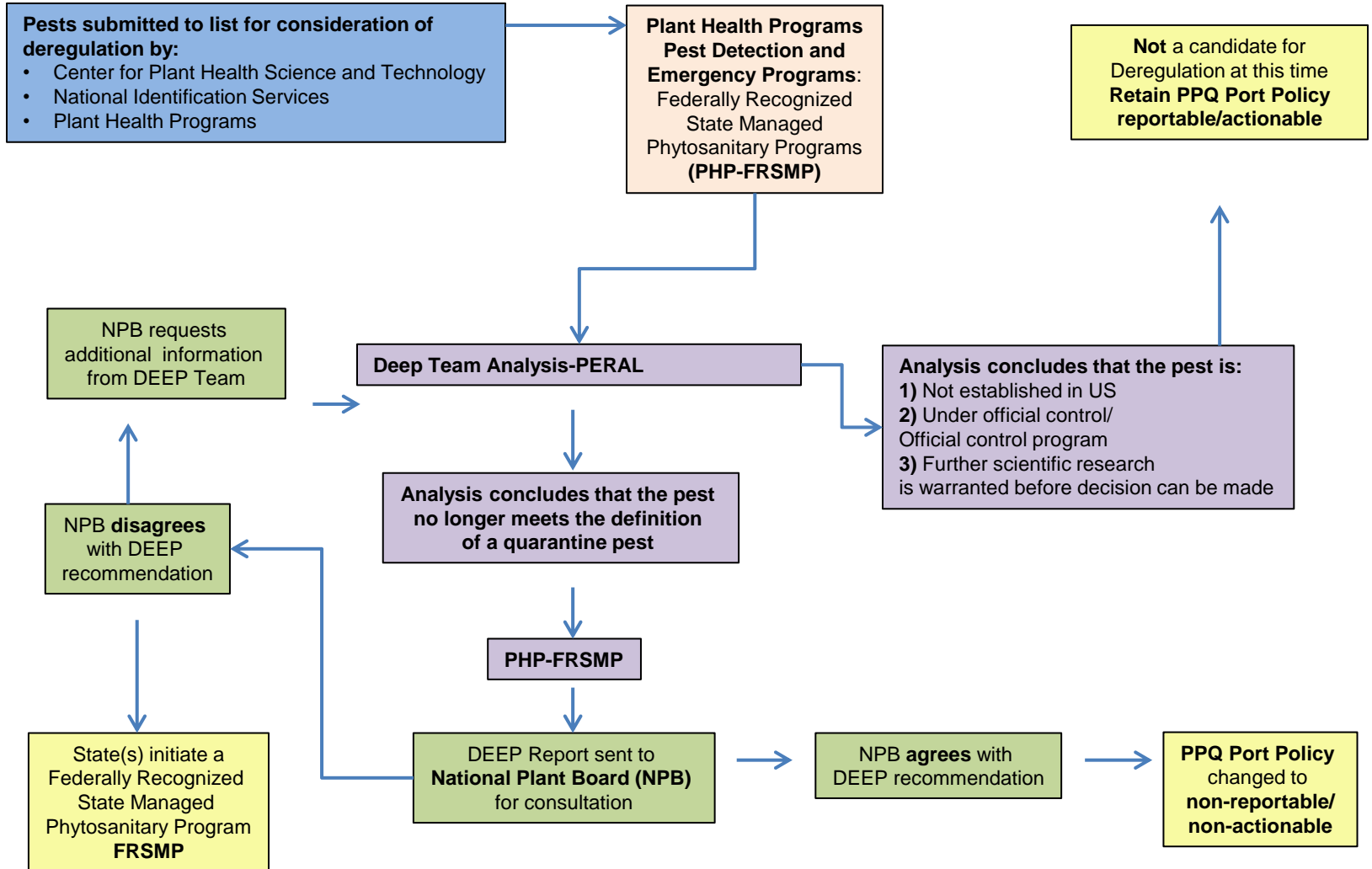
**Based on Presentation by
Dan Borchert, PhD
Entomologist Risk Analyst
APHIS-PPQ-CPHST-PERAL**



DEEP Basics

- DEEP stands for 'Deregulation Evaluation of Established Pests'
- The Plant Epidemiology and Risk Analysis Laboratory (PERAL) evaluates pests established in the United States that are still listed as actionable at ports of entry (POEs)
- PERAL then recommends to continue or stop taking action at POEs
- **Ceasing action at POEs is referred to as '*Deregulation*' for the purpose of this process**
- Pests evaluated by this process are referred to as 'DEEP pests'

Flowchart of DEEP Process and Outcomes





DEEP Results

- Since 2010, APHIS has added pests to the list of Pests No Longer Regulated at U.S. Ports of Entry.
- As a result, APHIS will no longer take regulatory action on these organisms at ports of entry. This action is consistent with U.S. trade policy, and fulfills international agreements while promoting safe trade.
- APHIS continues its successful collaboration with the National Plant Board. The list now includes 126 pests.
- To view the list of pests, or for further information on non-actionable pests, refer to https://www.aphis.usda.gov/aphis/ourfocus/planthealth/plant-pest-and-disease-programs/frsmp/ct_non-reg-pests
- For further information on the Federally Recognized State Managed Phytosanitary program refer to <https://www.aphis.usda.gov/aphis/ourfocus/planthealth/plant-pest-and-disease-programs/frsmp>